

Current part is item (2) on diagram. Available at www.oshkoshequipment.com

| (1) (a) FIG. NO. | (2) (b) ITEM NO. | (3) SMR CODE | (4) NATIONAL STOCK NUMBER | (5) PART NUMBER | (6) FSCM | (7) DESCRIPTION U/M | (8) INC IN UNIT |
|------------------------------|---------------------------|--------------------|------------------------------------|-----------------------|-------------|---|--------------------------|
| 1209-AIR COMPRESSOR ASSEMBLY | | | | | | | |
| 128 | 1 | PAOZZ | 4310-00-863-3155 | MS51322-1 | 96906 | COMPRESSOR, RECIPROCATING, POWER DRIVEN | EA 1 |
| 128 | 2 | PAOZZ | 5330-00-498-2426 | 11641987 | 19207 | GASKET: UNLOADER VALVE | EA 1 |
| 128 | 3 | PAOZZ | | N13799E | 06721 | VALVE ASSEMBLY, UNLOADER: AIR COMPRESSOR | EA 1 |
| 128 | 4 | PAOZZ | 5330-00-828-5027 | 7748823 | 19207 | GASKET: COMPRESSOR DISCHARGE ELBOW | EA 1 |
| 128 | 5 | PAOZZ | 5310-00-550-1130 | MS35333-40 | 96906 | WASHER, LOCK: 1/4 ID, 0.478 OD, UNLOADER VALVE ASSEMBLY TO AIR COMPRESSOR | EA 4 |
| 128 | 6 | PAOZZ | 5310-00-768-0319 | MS51968-2 | 96906 | NUT, PLAIN, HEXAGON: UNLOADER VALVE TO COMPRESSOR | EA 4 |
| 128 | 7 | PAOZZ | 4730-00-202-9744 | 201697 | 06853 | ELBOW, PIPE TO TUBE: COMPRESSOR UNLOADER VALVE | EA 1 |
| 128 | 8 | PAOZZ | 4730-00-518-9043 | 5189043 | 19207 | ELBOW, FLANGE TO TUBE: AIR COMPRESSOR DISCHARGE AB | EA 1 |
| 128 | 9 | PAZZ | 4730-00-054-2572 | MS39196-4 | 96906 | NUT, TUBE COUPLING: COMPRESSOR ELBOW AB, AC | EA 1 |
| 128 | 10 | PAOZZ | 4730-00-054-2571 | MS39197-4 | 96906 | SLEEVE, COMPRESSION: COMPRESSOR ELBOW AB, AC | EA 1 |
| 128 | 11 | PAOZZ | 4730-00-078-4097 | 8748337 | 19207 | ELBOW, TUBE TO BAR: DISCHARGE AIR COMPRESSOR AB | EA 1 |
| 128 | 12 | PAOZZ | 5310-00-959-4679 | MS35340-45 | 96906 | WASHER, LOCK: COMPRESSOR DISCHARGE AND AIR CLEANER TO COMPRESSOR | EA 4 |
| 128 | 13 | PAOZZ | 5306-00-225-8503 | MS90725-39 | 96906 | BOLT, MACHINE: DISCHARGE ELBOW AB | EA 2 |
| 128 | 14 | PAOZZ | 5306-00-225-8499 | MS90725-34 | 96906 | SCREW, CAP, HEXHEAD: AIR COMPRESSOR DISCHARGE MANIFOLD TO AIR COMPRESSOR AC | EA 2 |
| 128 | 15 | PAOZZ | 2530-00-908-7303 | 7771286 | 19207 | MANIFOLD, DISCHARGE: AIR COMPRESSOR AC | EA 1 |
| 128 | 16 | PAOZZ | 5306-00-225-8497 | MS90725-32 | 96906 | BOLT, MACHINE, HEXHEAD: AIR CLEANER TO AIR COMPRESSOR | EA 2 |
| 128 | 17 | PAOZZ | 5330-00-818-0508 | 7748826 | 19207 | GASKET: AIR COMPRESSOR AIR CLEANER | EA 1 |
| 128 | 18 | PAOZZ | 2530-00-986-0013 | MS53005-1 | 96906 | AIR CLEANER, INTAKE: AIR COMPRESSOR | EA 1 |
| 128 | 19 | PAOZZ | 5315-00-012-4553 | MS35756-17 | 96906 | KEY, WOODRUFF: COMPRESSOR SHAFT PULLEY | EA 1 |
| 128 | 20 | PAOZZ | 2530-00-860-0573 | 10889938 | 19207 | PULLEY, HALF COMPRESSOR: COMPRESSOR DRIVE | EA 1 |
| 128 | 21 | PAOZZ | 5305-00-269-3214 | MS90725-64 | 96906 | SCREW, CAP, HEXHEAD: ADJUSTABLE PULLEY HALF TO PULLEY FLANGE | EA 2 |
| 128 | 22 | PAOZZ | 5310-00-959-4675 | MS35340-46 | 96906 | WASHER, LOCK: ADJUSTABLE PULLEY HALF TO PULLEY FLANGE | EA 2 |
| 128 | 23 | PAOZZ | 3030-00-294-9541 | 8332236 | 19207 | BELT: DRIVE, AIR COMPRESSOR AA | EA 1 |
| 128 | 23 | PAOZZ | 3030-00-849-1033 | 10889932 | 19207 | BELT: DRIVE, AIR COMPRESSOR AB, AC | EA 1 |



Current part is item (2) on diagram. Available at www.oshkoshequipment.com

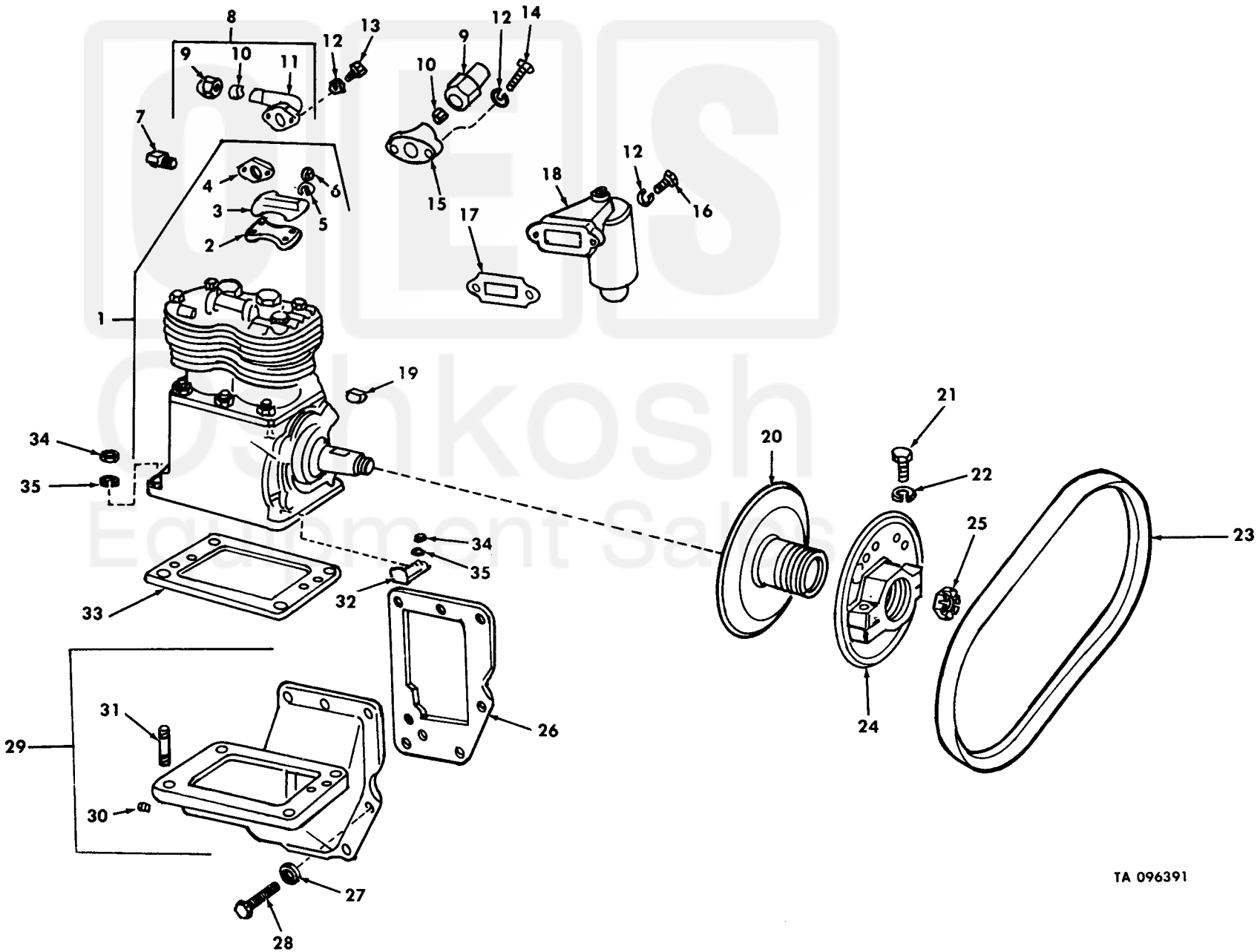


Figure 128. Air compressor, pulley and belt.

TA 096391